



INTERNATIONAL
FOXP1
FOUNDATION™



**Kind
Beter**

Foundation Child Well

JUNE 19TH - 21ST 2025

IJMUIDEN

**THE NETHERLANDS
EUROPE**



INTERNATIONAL
FOXP1
FOUNDATION™



Program.....	P3
Research conference	
Family gathering	
Where we meet.....	P4
Where you can stay.....	P5
How to get there.....	P6
What you can do and visit.....	P7-14



PROGRAM

Thursday June 19th

Research conference

- | | Time |
|--|-------------|
| • Conference at Hotel Leonardo (Parents/family also welcome) | 09.00-17.00 |
| • Dinner at Hotel Leonardo with families | 18.00-20.00 |

Family gathering

- | | |
|--|-------------|
| • Arrival and Meet & Greet at Hotel Leonardo | 16.00-18.00 |
| • Dinner at Hotel Leonardo with researchers | 18.00-20.00 |

Friday June 20th

Family gathering

- | | |
|--|-------------|
| • Drop-off kids by Rafter on BaseCamp | 09.00 |
| • Morning conference in Hotel Leonardo for adults
Key speakers presenting various FOXP1 Research topics | 09.15-12.00 |
| • Lunch for adults, speakers, children and caretakers
at hotel Leonardo | 12.00-13.30 |
| • Children and caretakers return to the Rafter on BaseCamp | 13.30 |
| • Breakout sessions on different symptoms,
languages and interests, moderated by a specialist
on the topic | 13.30-16.45 |
| - Language-specific sessions or Topic 1 | 13.30-15.00 |
| - Break | 15.00-15.15 |
| - Topic 2 | 15.15-16.45 |
| • Closing ceremony | 16.45-17.00 |
| • Dinner at Hotel Leonardo for everyone | 17.30-19.30 |
| • Drinks at BaseCamp for everyone who wants to join | 20.00-?? 😊 |

Saturday June 21st

Family gathering

- | | |
|--|-------------|
| • Walk on the Beach and share insights | 10.00-11.30 |
|--|-------------|





WHERE WE MEET

Location

2 locations close together and in walking distance from the beach.

Basecamp - Refter for the kids and caretakers

<https://basecamp-ecoresorts.com/meetings-events/ijmuiden/>



Leonardo hotel - top floor for the adults

<https://www.leonardo-hotels.nl/ijmuiden/leonardo-hotel-ijmuiden-seaport-beach>





WHERE YOU CAN STAY

Tiny Houses

You can stay in the Tiny house on Basecamp

- <https://basecamp-ecoresorts.com/holiday/zoek-boek/>



Hotel Leonardo

We have a special rate for bookings in the Leonardo hotel.

- Room rate €169,- for a single.
Including breakfast / excluding tourist tax
- Room rate €189,- for a double.
Including breakfast / excluding tourist tax
- Room rate €209,- for a family room.
Including breakfast / excluding tourist tax

To Book a Room: Email to meetings.ijmuiden@leonardo-hotels.nl

with your room request, include the following information:

Your name, Your date of birth, Type of room you request, Number of people in your group, Date you will arrive, Date you will depart, Number of nights you will stay and mention that you are attending the FOXP1 Conference.

You will receive confirmation from the hotel with a link to make a deposit

- <https://www.leonardo-hotels.com/ijmuiden/leonardo-hotel-ijmuiden-seaport-beach>



Campgrounds

There are also a possibilities to camp on a campground: for own tents and campervans, but also availability of small chalets and mobile homes 3 min by car, 15 minutes walk from the location.

- <https://duindoorn.nl/en>
- <https://www.ijmuiden.nl/locatie/natuurkampeerterreinschoonenberg/>





HOW TO GET THERE

Transportation options to IJmuiden Netherlands from Amsterdam Airport Schiphol (AMS) or Amsterdam Central Station:

Arriving by plane from Amsterdam Airport Schiphol (AMS)

- It is easy to rent a car from the airport, or
- Take a Taxi or Uber to the IJmuiden location
- Public transport is also available and reliable.
You can easily plan your trip on the app 9292 Travel with us
- Take a train (NS Sprinter) at Schiphol Airport train station to Amsterdam Sloterdijk, then transfer to a bus (Connexxion R-Net Bus 382) to bus stop IJmuiden aan Zee. It takes about 70 min in total.

Arriving by train/public transport from Amsterdam Central (train) Station

- Take a Taxi or Uber to the IJmuiden location
- Public transport is also available and reliable. You can easily plan your trip on the app 9292 Travel with us
- Take a train (NS Sprinter) at Amsterdam Central Station to Amsterdam Sloterdijk then transfer to a bus (Connexxion R-Net Bus 382) to bus stop IJmuiden aan Zee. It takes about 55 min in total.

Arriving by car from Amsterdam

- Follow directions to Amsterdam. When approaching Amsterdam, follow the signs to Haarlem and when approaching Haarlem, signs for IJmuiden will be visible. Follow signs to IJmuiden aan Zee and you will arrive at both locations. .
- Basecamp and the Lenoardo hotel are adjacent to a large parking lot with over 1500 parking spaces. The costs are €14 per car per day.





WHAT YOU CAN DO AND VISIT (For the kids)



Theme park the Efteling (North Brabant)

Fairy tale amusement park, beautiful for young and old

- Address: Europalaan 1, 5171 KW Kaatsheuvel



Legoland (South Holland)

Exciting attraction ride through a beautiful LEGO city

- Address: Strandweg 13K, 2586 JK Den Haag



Safari Parc Beekse Bergen (North Brabant)

Come face to face with wild animals and enjoy all the activities the park has to offer

- Address: Beekse Bergen, 1, 5081 NJ Hilvarenbeek



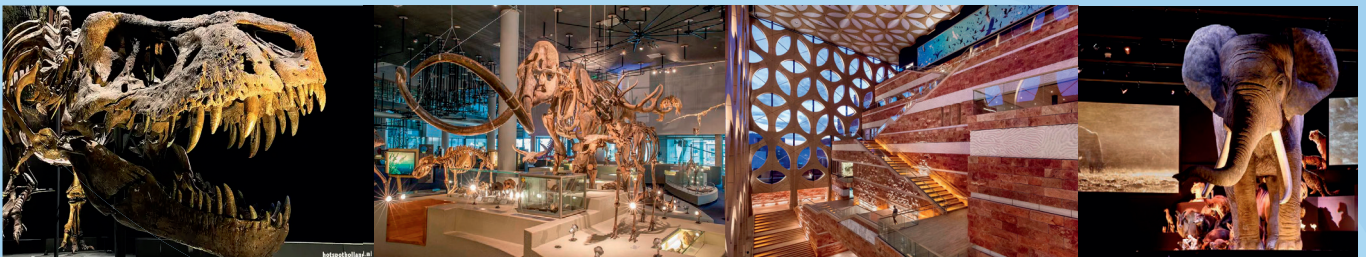
WHAT YOU CAN DO AND VISIT (For the kids)



Duinrell (South Holland)

Come enjoy the largest water/amusement park in the Benelux

- Address: Duinrell 1, 2242 JP Wassenaar



Naturalis Biodiversity Center (South Holland)

Want to see some dinosaurs, this is the perfect place

- Address: Darwinweg 2, 2333 CR Leiden



Linnaeushof (North Holland)

This is Europe's largest playground

- Address: Glipperweg 4C, 2104 AK Heemstede



WHAT YOU CAN DO AND VISIT (For the whole family)



Royal Delft - Koninklijke Porceleyne Fles (South Holland)

Visit the last factory of the world famous blue and white earthenware

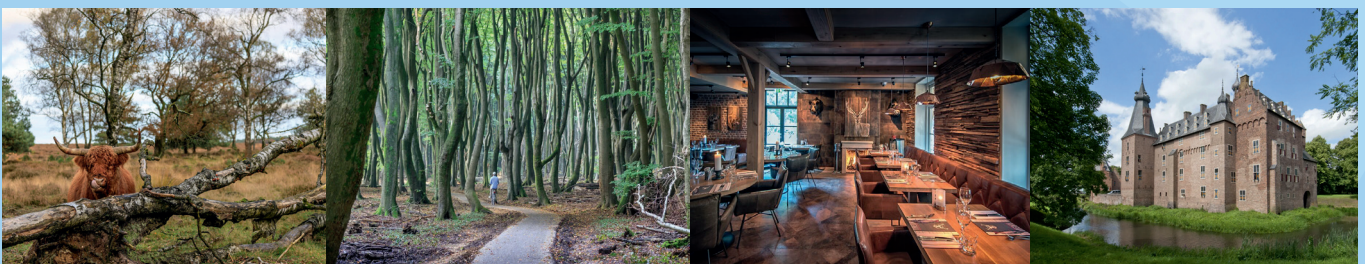
- Address: Rotterdamseweg 196, 2628 AR Delft



Gouda Cheese Market (South Holland)

Visit the last factory of the world famous blue and white earthenware

- Address: Rotterdamseweg 196, 2628 AR Delft



Veluwe (Gelderland)

Come and enjoy this huge nature reserve

- Address: Houtkampweg 9, 6731 AV Otterlo





WHAT YOU CAN DO AND VISIT (For the whole family)



Keukenhof (South Holland)

The Keukenhof is one of the largest flower garden of Europe.

- Address: Stationsweg 166A, 2161 AM Lisse



Madurodam (South Holland)

Madurodam is a miniature park and tourist attraction in the Scheveningen district of The Hague in the Netherlands.

- Address: George Maduroplein 1, 2584 RZ Den Haag



Corpus (South Holland)

This is a human biology interactive museum. it is billed as “a journey through the human body”, the museum provides both education and entertainment through a combination of permanent and variable collections.

- Address: Willem Einthovenstraat 1, 2342 BH Oegstgeest



CITIES YOU CAN VISIT



Zaanse Schans (North Holland)

Historic windmills and distinctive green wooden houses were relocated here to recreate the look of an 18th/19th-century village.

- Address: Kalverringdijk 31 1509 BT Zaandam



Waddeneilanden (North Holland, Groningen, Friesland)

Step on the boat and leave everything behind you. The Wadden Islands are a guarantee for relaxing and getting a breath of fresh air.

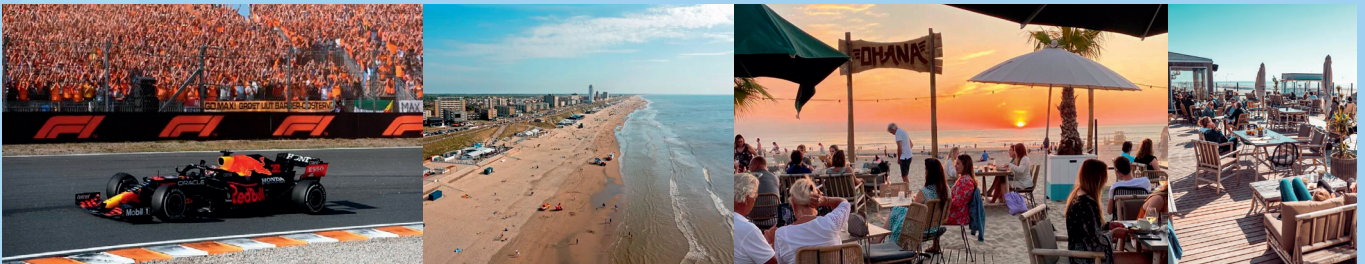


Volendam (North Holland)

Visit the town and the Volendam Museum. It features paintings, sculptures and pottery from 1800 to the present, a gallery of traditional costumes and mosaics made from millions of cigar bands.



CITIES YOU CAN VISIT



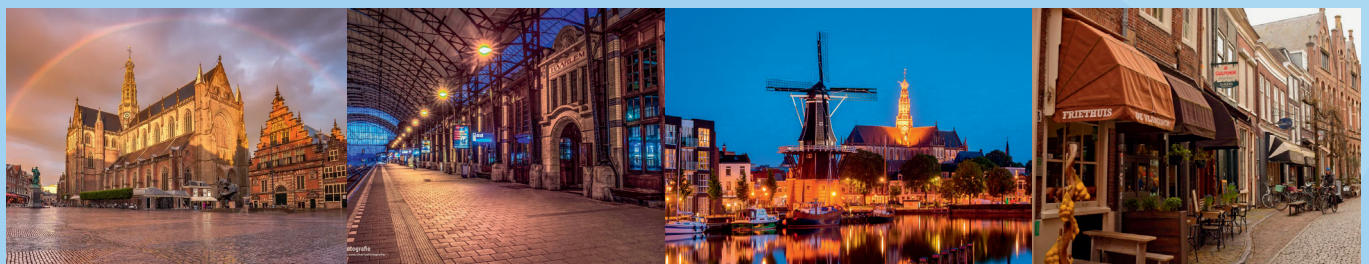
Zandvoort (North Holland)

Come and enjoy a race in Zandvoort or drive on the Formula 1 circuit for an exceptional experience. You can also enjoy a beautiful day at the beach



Amsterdam (North Holland)

Amsterdam is being known for its beautiful canals and rushing city center. You can also enjoy a nice walk through the Vondel park or a boat trip on the canals.



Haarlem (North Holland)

Haarlem is a city outside of Amsterdam in the northwest Netherlands. Once a major North Sea trading port surrounded by a defensive wall, it retains its medieval character of cobblestone streets and gabled houses.



CITIES YOU CAN VISIT



Scheveningen (South Holland)

Scheveningen is one of the eight districts of The Hague, Netherlands, as well as a subdistrict of that city. Scheveningen is a modern seaside resort with a long, sandy beach, an esplanade, a pier, and a lighthouse.



Leiden (South Holland)

Leiden is a city in the Dutch province of South Holland. It's known for its centuries-old architecture and for Leiden University,



Den Haag (South Holland)

Den Haag is a city on the North Sea coast of the western Netherlands. Its Gothic-style Binnenhof (or Inner Court) complex is the seat of the Dutch parliament, and 16th-century Noordeinde Palace is the king's workplace. The city is also home to the U.N.'s



WHAT YOU CAN DO AND VISIT

Besides all the nice places and cities you can visit in The Netherlands you can also go to one of the other nice cities in Europe!

Quick travel from Amsterdam

Brussels by:

- flight 50min
- train 1h50
- car 2h10

Paris by:

- flight 1h10
- train 3h18
- car 5h30

London

- flight 1h20
- train 5h

Berlin by:

- flight 1h30
- train 6h30
- car 7h30

Barcelona

- flight 2h15
- train 13h30

